

ALOHA LOAD BALANCER

RESTORING FACTORY DEFAULTS IN CONSOLE MODE

"APPNOTE" #0031 —RESTORING FACTORY DEFAULTS IN CONSOLE MODE

This application note is intended to help you restore the factory defaults of an ALOHA Load Balancer should it be inaccessible either via SSH or the Web interface due to an invalid configuration.

CONSTRAINT

Have an RS-232 console cable.

OBJECTIVE

Restore the factory defaults in order to recover the Aloha load-balancer when no other access method (SSH and Web) is available.

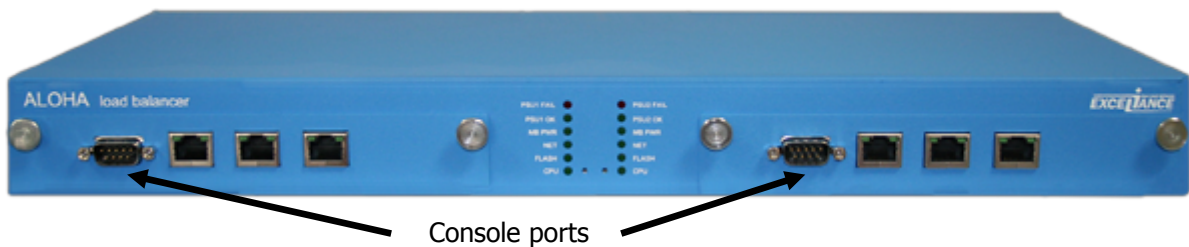
COMPLEXITY



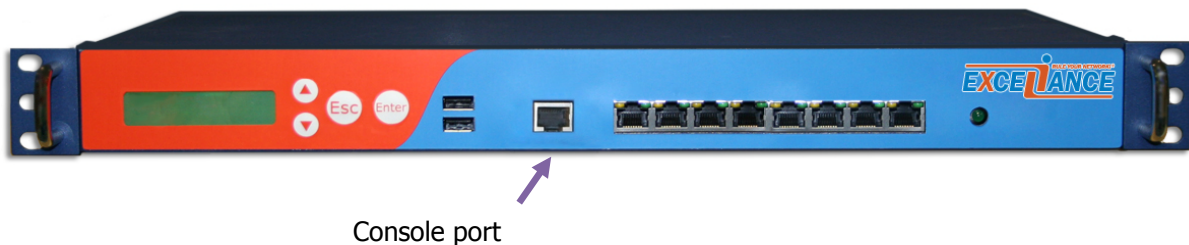
VERSIONS CONCERNED

V 3.x and later

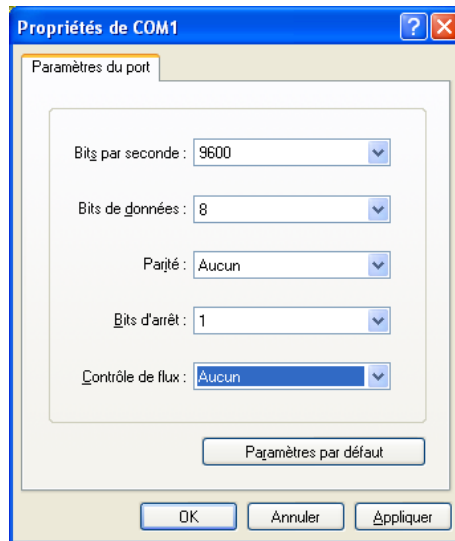
ALOHA ALB2K MODELS



ALOHA MODELS ALB4K – ALB8K – ALB16K



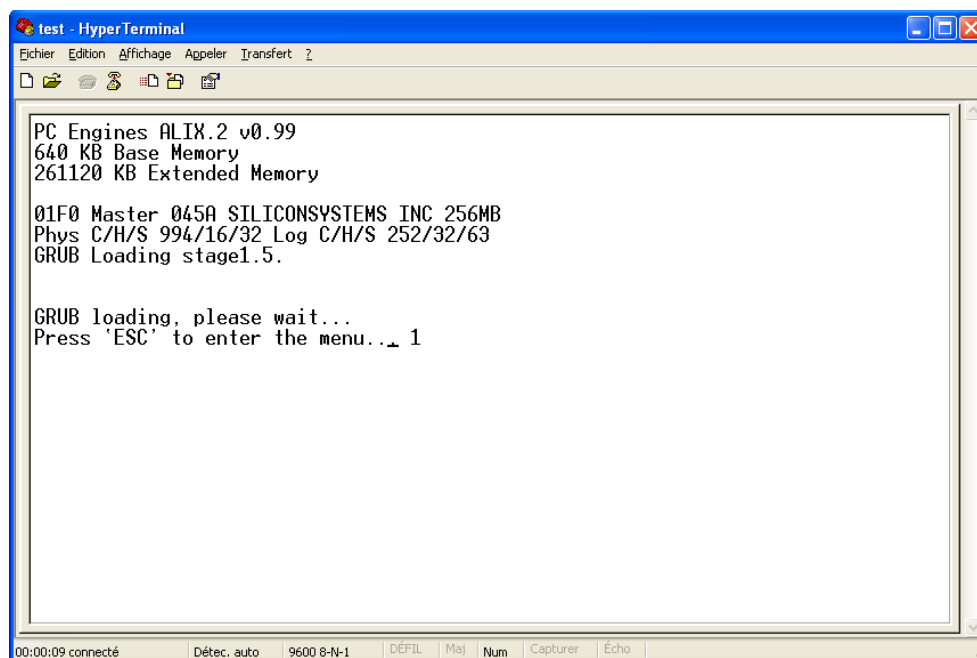
HYPER TERMINAL CONFIGURATION



In order to configure the terminal, you must specify the following parameters.

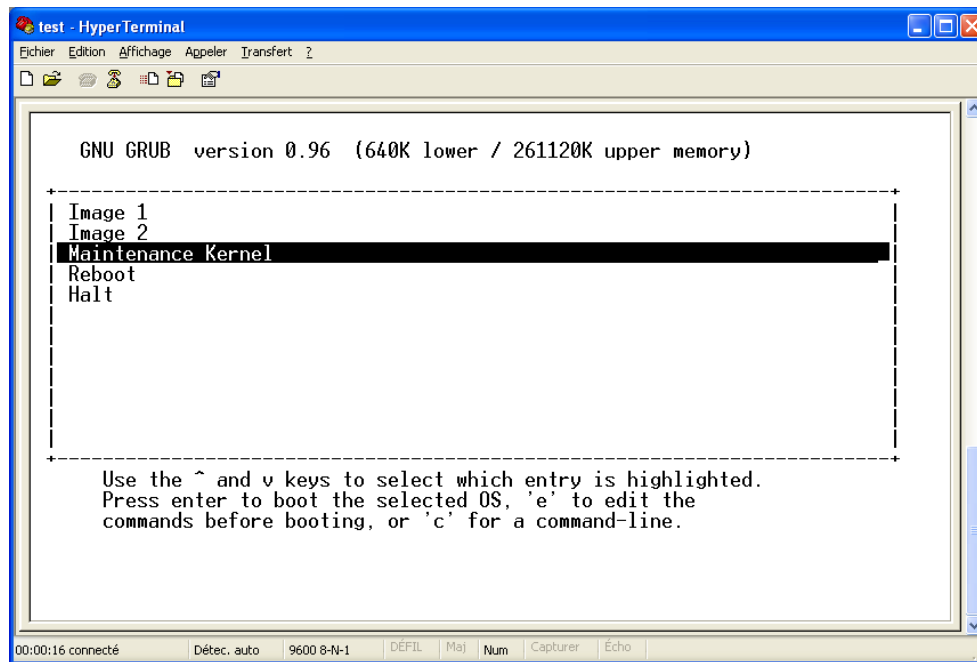
- Bits per second: 9600
- Data bits: 8
- Parity: None
- Stop bits: 1
- Flow control: None

MENU ACCESS



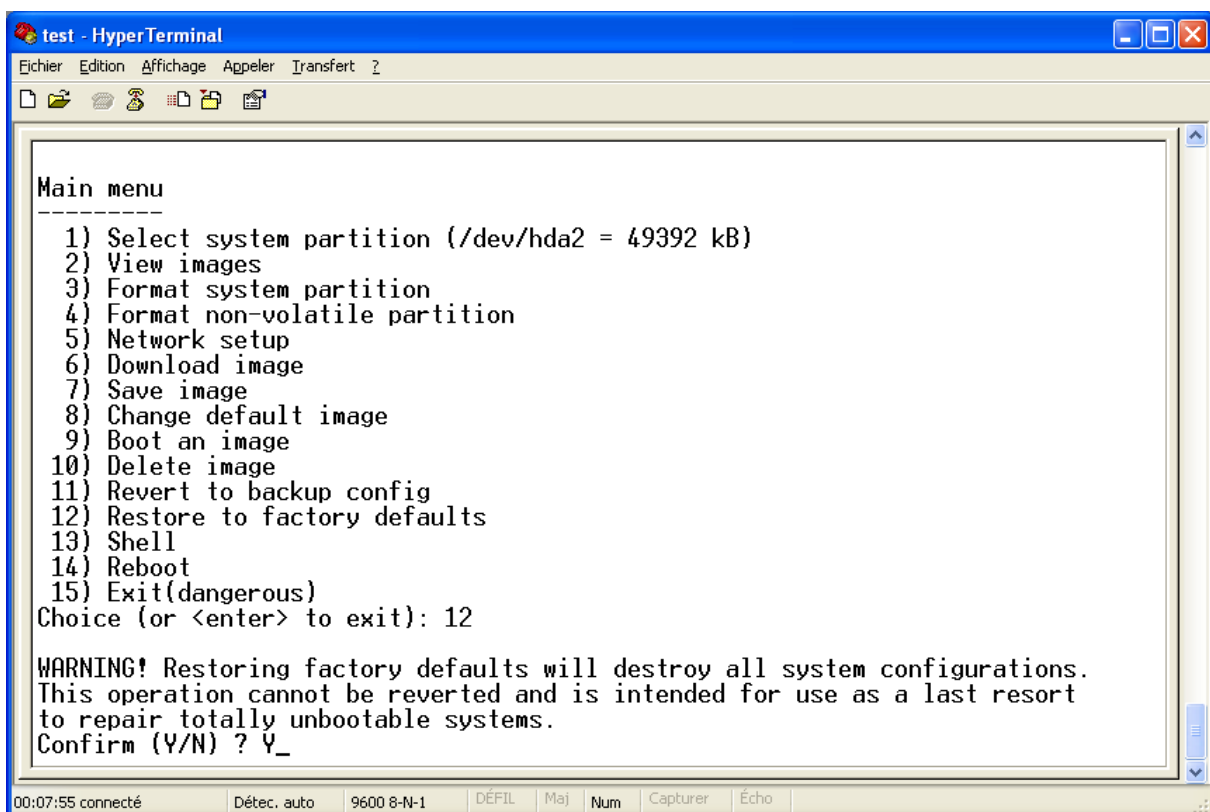
Physically restart the device. Press the "ESC" key on your keyboard in order to display the menu once the message appears on the Terminal screen.

ACCESS TO KERNEL MAINTENANCE MODE



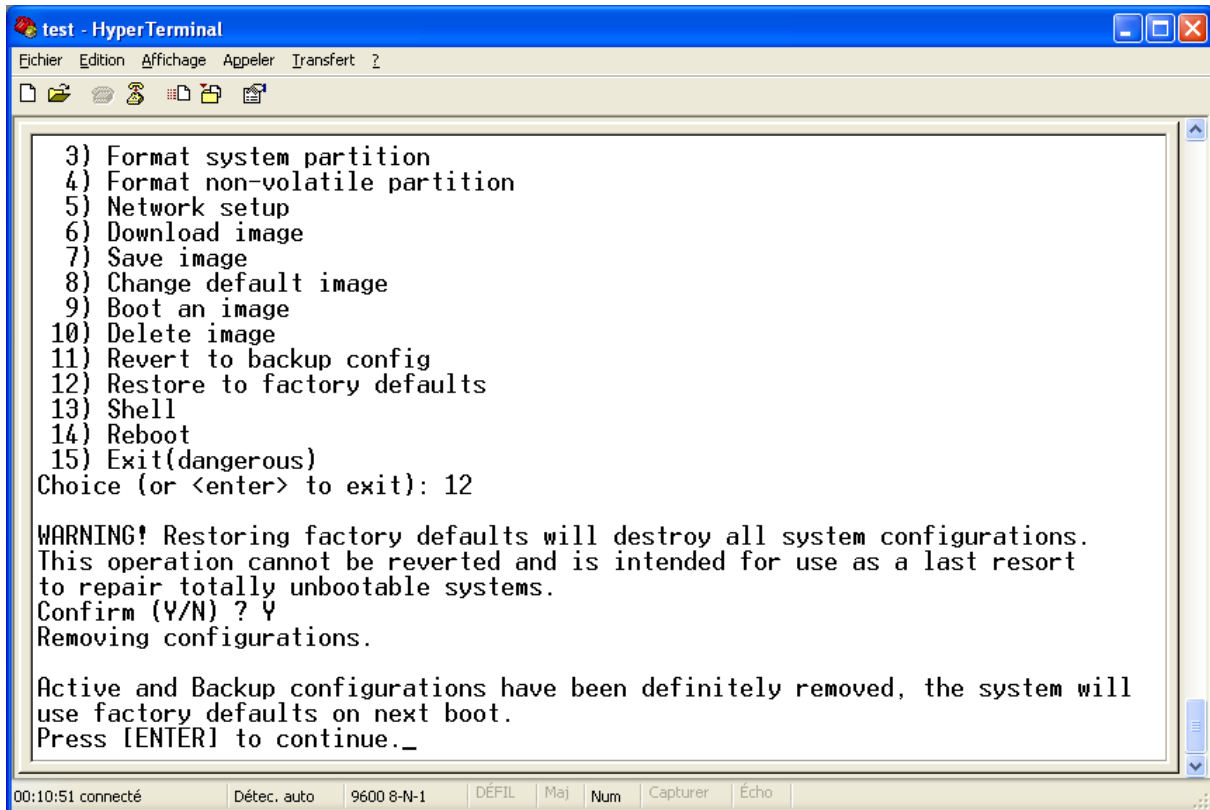
To access the various sub-menus, use the up and down arrows to choose "Maintenance Kernel" mode. Press the "Enter" key on your keyboard to confirm.

ACCESS TO THE RESTORE MENU



To restore the factory defaults, select choice 12 and confirm by either "Y" or "N".

RESTARTING THE ALOHA



```
test - HyperTerminal
Fichier Edition Affichage Appeler Transfert ?
3) Format system partition
4) Format non-volatile partition
5) Network setup
6) Download image
7) Save image
8) Change default image
9) Boot an image
10) Delete image
11) Revert to backup config
12) Restore to factory defaults
13) Shell
14) Reboot
15) Exit(dangerous)
Choice (or <enter> to exit): 12

WARNING! Restoring factory defaults will destroy all system configurations.
This operation cannot be reverted and is intended for use as a last resort
to repair totally unbootable systems.
Confirm (Y/N) ? Y
Removing configurations.

Active and Backup configurations have been definitely removed, the system will
use factory defaults on next boot.
Press [ENTER] to continue._

00:10:51 connecté   Détec. auto   9600 8-N-1   DÉFIL   Maj   Num   Capturer   Écho
```

Press the "Enter" key on your keyboard and restart the ALOHA in order to restore the factory defaults.

Important: You must then connect to the following address: <http://192.168.0.200:4444>.